

**Public Summary**

# **FOREST MANAGEMENT PLAN**

FOREST SC





## ENVIRONMENTALLY APPROPRIATE

It protects and conserves protection areas and High Conservation Value forests, adopting the best practices for identifying, controlling, minimizing and mitigating environmental impacts and biodiversity conservation.

## SOCIALLY BENEFICIAL

It respects the workers' rights and local communities, dialoguing and strengthening its relationship in the region in which it operates.

## ECONOMICALLY VIABLE

It builds markets, adding value and creating equitable access to the forest benefits, ensuring the supply of resin and wood from renewable plantations.





## SUMMARY

All photographs in this document are part of Irani's stock image.

6

Presentation

8

Sustainability Policy

10

Sustainable Development Goals – SDGs

12

Actuating Region

14

Public Summary

16

FSC® Certification - Forest Stewardship Council®

18

Forest Management Unit Description Council®

20

Forest Management

26

Forest Benefits

28

Biodiversity

42

Social and Environmental Management and Monitoring

46

Communication Channels



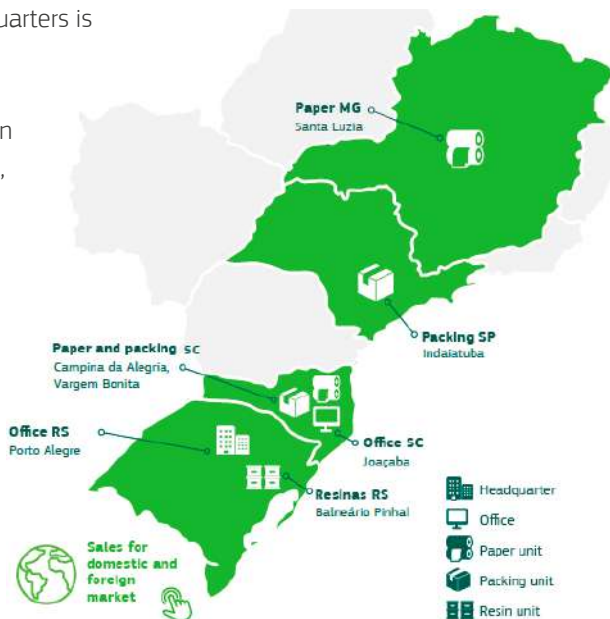
## Presentation

Irani is one of the main Brazilian industries of sustainable corrugated cardboard packaging and sustainable corrugated cardboard sheets. Committed to sustainability, also produces kraft paper and resins for the domestic and foreign markets. It was established in 1941 and is controlled by Habitasul since 1994, it is a publicly traded company that uses renewable and planted forest-based raw materials in its products. The business units are located in Santa Catarina (SC), São Paulo (SP) and MinasGerais (MG) and its headquarters is in Porto Alegre (RS).

In 2020, along with the follow-on (re-IPO), the brand was renewed, which represented a new era of growth and evolution, further reinforcing the commitment to innovation and strengthening of the production chain with stakeholders.

In Santa Catarina, since 2008 the FSC® Forest Management Certificate has been maintained for its own forests and some partnership areas. In addition,

the Chain of Custody (CoC) certificate is maintained for the manufacturing units in Vargem Bonita (SC), Indaiatuba (SP), Santa Luzia (MG) and Resinas (RS). This certification allows IRANI to manufacture part of its products with the FSC® seal, since the Company does not use 100% of certified raw materials in its manufacturing process.



### ABOUT IRANI PAPER AND PACKAGING S.A.

Our Strategic Planning encompasses a 10-year cycle, which is reviewed every three years. The current cycle refers to the period from 2021 to 2030.

#### MISSION

Build value relationships to generate prosperity

#### VISION

Be the best and most admired company in the business in which it operates.

#### VALUES

- ▲ Life, first of all
- ▲ Sustainability
- ▲ Protagonism
- ▲ Diversity and Inclusion
- ▲ Cordiality
- ▲ Integrity
- ▲ Focus of the client
- ▲ Innovation

## Sustainability Policy



In order to generate value for stakeholders, we have a Sustainability Policy in which we are committed to:

1



Ensure **customer satisfaction** by offering products and services as per **Customer Focus of the client**

2



Use resources sustainably, **preserving the environment**, reducing environmental impacts, greenhouse gas emissions and promoting a **circular economy** regarding the handling of waste.

3



Promote the **health and well-being of employees** by preventing injuries and damage to occupational health.

4



Ensure **respect for diversity**, inclusion of people with disabilities and no child labor, forced labor or slave labor.

5



Promote **social investments and encouraging volunteering** based on initiatives in the areas of education, sports, citizenship, environmental preservation, culture, and income generation in the nearby communities.

8



Ensure appropriate and transparent governance practices and ensure results that promote business **growth and profitability** in a sustainable manner.

6



Guarantee the supply of raw materials, in accordance with the **best forest management practices**, in a sustainable manner and with absolute respect for the environment.

9



Ensure an **integrated management system** that guarantee **continuous improvement** and **compliance with applicable legal requirements** and other requirements.

7



Align our actions with the **global agenda** proposed by the Sustainable Development Goals (SDGs) of the United Nations (UN) and the commitments voluntarily signed.

10



Adopt measures and strategies to **mitigate and adapt to climate changes** through projects such as Clean Development Mechanisms and the reduction of greenhouse gas emissions.



## Sustainable Development Goals – SDGs



Since 2020, we have become signatories to the UN Sustainable Development Goals Movement, making commitments to sustainable development and the maintenance of ESG (Environmental, Social and Governance) actions. In this way, we are committed to 17 goals and 169 global action targets that shall be achieved by 2030, most of them

covering environmental, economic, and social dimensions of sustainable development, in an integrated and interrelated way. In 2021 the SDG studies were completed and during 2022 it was developed actions to improve our performance and we will revisit the prioritized SDGs.

**Reduce** 30% of specific water use by 2030.

**Zero** disposal of non-hazardous waste in landfills by 2030.

**Reduce** specific waste generation by 5% by 2030.

**Generate** 460,000 tons of UN-certified carbon credits by 2030.

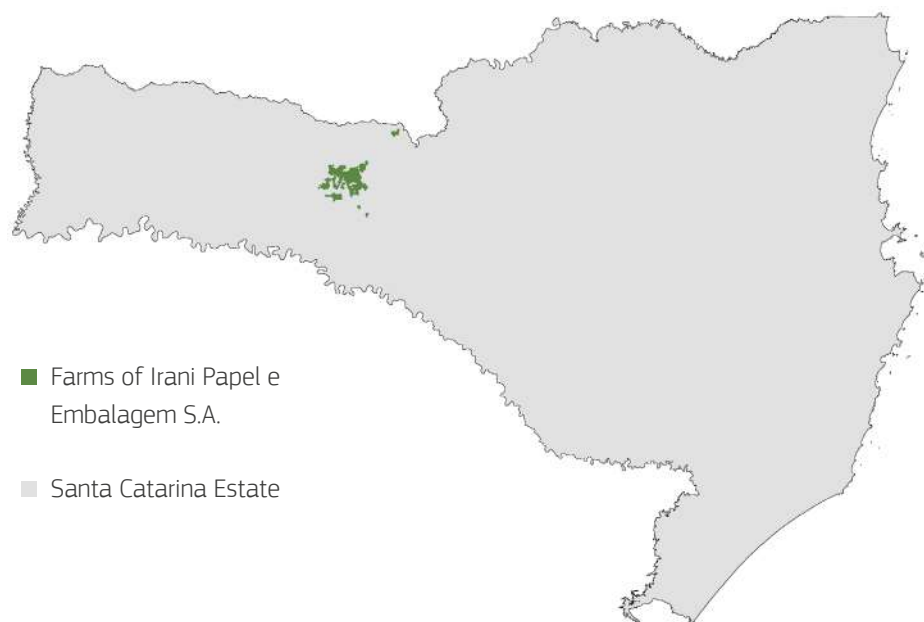
**Increase** the difference balance between GHG emissions and removals by 20% by 2030.

**Certify** all business units with the ISO 14001 by 2030.





## Actuating Region



### GEOMORPHOLOGY

The geology of the western region of Santa Catarina fits into the Serra Geral formation, consisting of basaltic volcanic rocks.

### HYDROGRAPHY

The areas of Irani are inserted in the hydrographic basins of River Irani, River

Chapecó and River Jacutinga, in the midwest region of Santa Catarina.

### SOILS

Predominates three types of soil in the region: soils: Humic Cambisol, Haplic Nitosol and Bruno Oxisol.

### CLIMATE

The region's climate, according to the Köppen classification, is Cfb type. The average annual temperature ranges between 16° C and 18° C, with monthly averages between 11.5° C in the coldest months (June and July) and 20.7° C in the hottest months (January and February ). The annual relative humidity is between 76-80% and the average annual rainfall is 1,815 mm, well distributed throughout the year.

### MUNICIPALITIES SOCIOECONOMIC SITUATION IN IRANI'S INFLUENCE AREA

The municipalities inside IRANI's radius of action have their economy based on agriculture, livestock and reforestation.

The average HDI (Human Development Index) of the municipalities where it operates is 0.713, while the average for Santa Catarina is 0.774 (IBGE, 2010).



## Public summary

### PURPOSE OF THE PUBLIC SUMMARY

The Forest Management Plan of Irani Paper and Packaging S.A. aims to impart the Company's commitment to the sustainable management of its properties, informing its responsibility towards the environment and people.

This document summarizes the actions developed and shows that they follow strict controls and comply with environmental legislation, respecting the FSC® Principles and Criteria.

The Forest Management Plan of Irani Paper and Packaging S.A. is subject to modifications, as activities are constantly evolving, and the Company strives for the quality of the entire production process.

### PURPOSE OF FOREST MANAGEMENT

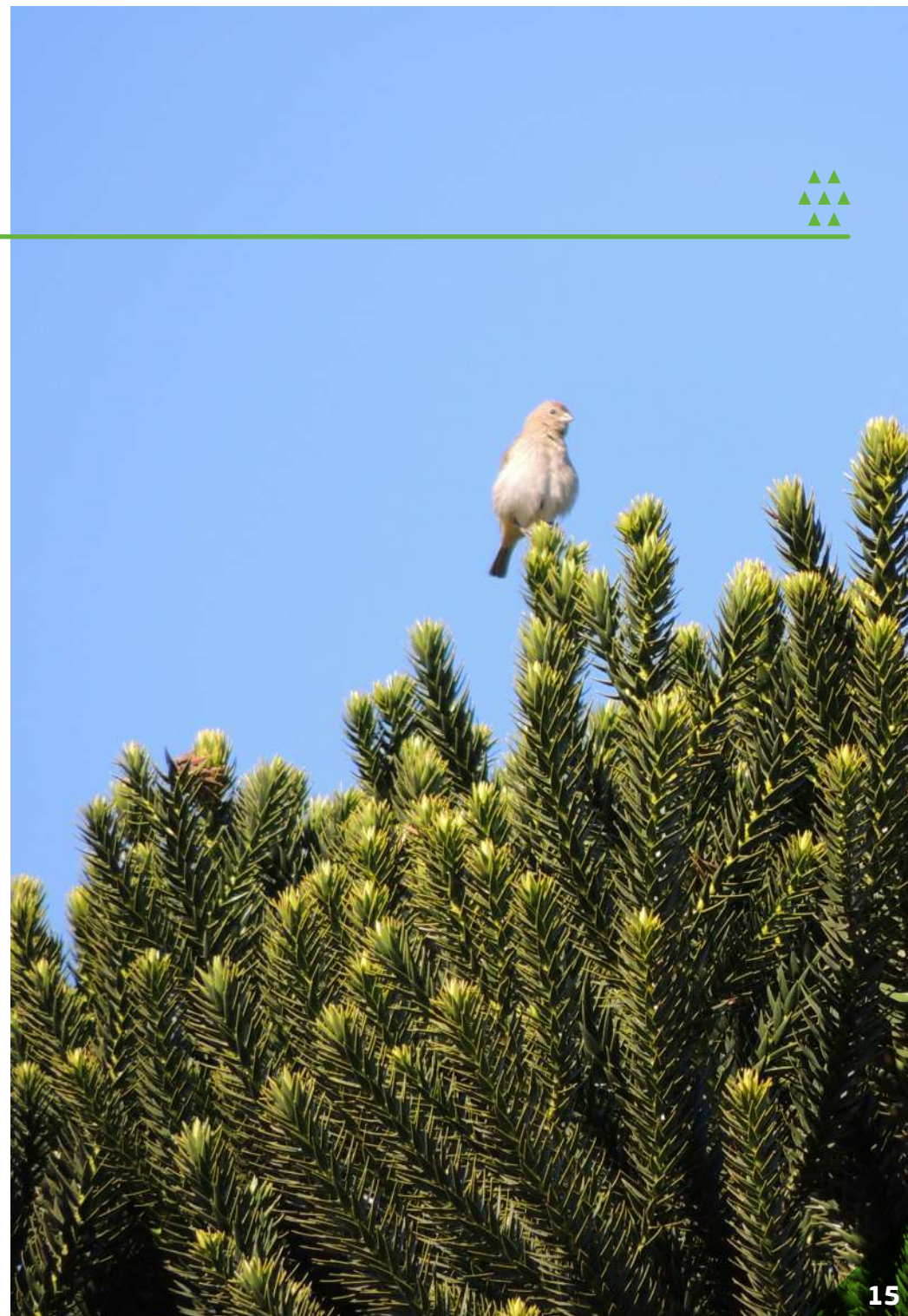
To produce forestry raw material with high quality and competitive costs, based on recognized forestry and management techniques, to meet the industrial demand of Irani Paper and Packaging S.A.

### FORESTRY MISSION

Ensure the sustainable supply of high-quality forestry raw materials at competitive costs to the Paper Unit by using planted forests, with absolute respect for environment and people.

### COMMITMENT TO FSC®

Irani Paper and Packaging S.A. undertakes to carry out the management of its forests in accordance with the Principles and Criteria of the FSC® (Forest Stewardship Council), implementing the necessary improvements for its integral attendance and monitoring of the indicators evolution that define a good forest management.





## FSC® Certificate – Forest Stewardship Council® – Our commitment

The FSC® – Forest Stewardship Council – is a non-governmental institution created in 1993 in response to an international concern about the world's forests future. The concept of certification emerged to control forest production practices, valuing the products that come from a responsible management of forests.

A group made up of companies and socio-environmental organizations from around the world started negotiations to create an independent entity, which would establish universal principles to guarantee a good forest management. Since then, the FSC® has become the most internationally credible forest certification system, equally incorporating the interests of social, environmental, and economic groups.

Certification is a voluntary process, where a forest venture is evaluated by an independent organization, the certifier, which verifies compliance with environmental, economic, and social issues that are part of the FSC® principles and criteria.

1. Compliance with FSC® Laws and Principles;
2. Responsibilities and Rights of Land Ownership and Use;
3. Rights of native tribes;
4. Community Relations and Workers' Rights;
5. Benefits of the Forest;
6. Environmental Impact;
7. Management Plan;
8. Monitoring and Evaluation;
9. Maintenance of High Value Conservation Forests;
10. Plantations.





# Description of the Forest Management Unit

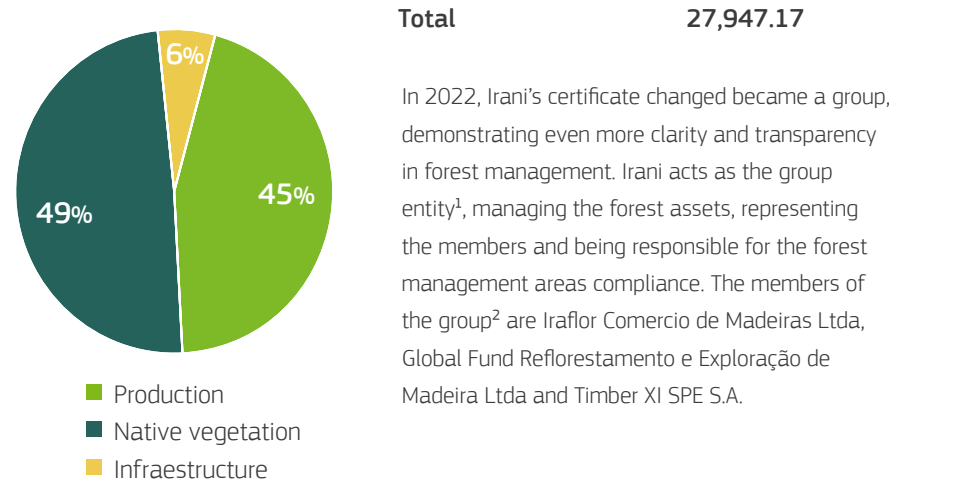
Irani Paper and Packaging S.A. has a great influence over the municipalities economy where it operates, bringing positive impacts to the development and growth of the region.

## ENTERPRISE

IRANI's certified forest areas are located in 13 properties distributed in 5 municipalities in the midwest region of Santa Catarina: Água Doce, Catanduvas, Irani, Ponte Serrada and Vargem Bonita.

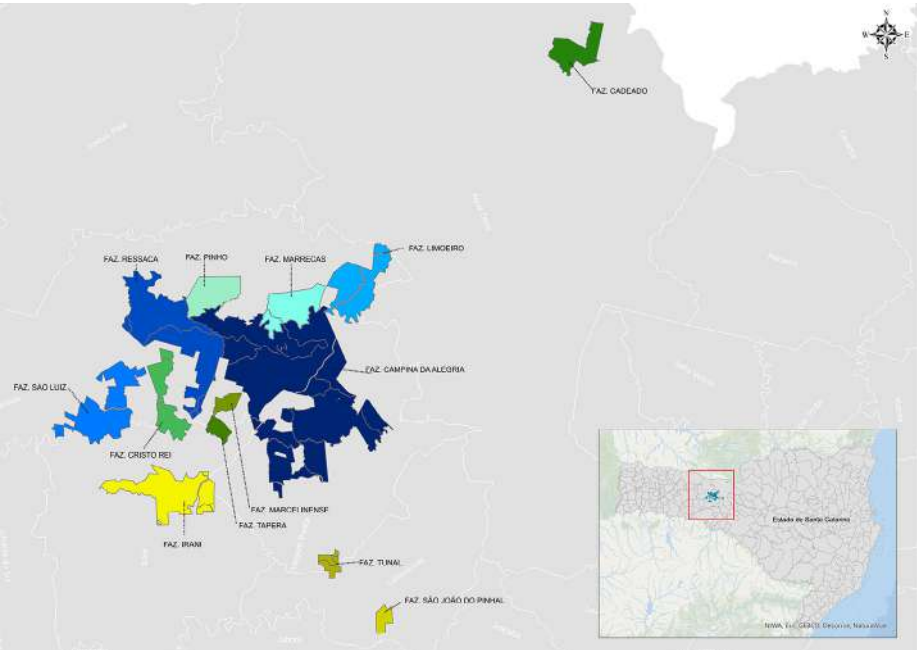
## SOIL USAGE

Land use	Description	Area (ha)
Production areas (owned)	<i>Pinus spp, Eucalyptus spp. e outras.</i>	12,468.47
Native vegetation	Legal reserve, APP and other preserved areas	13,658.70
Infraestructure and other areas	Roads, reservoirs, improvements, etc.	1,820.00



<sup>1</sup> Group entity: entity that represents the forest properties that constitute a group with FSC® forest management certification; responsible for compliance with FSC-STD-005 standard.

<sup>2</sup> Group members: owner or manager of the forests that are in the scope of FSC® forest management certification group.





## Forest Management

Irani's forest management involves planning, research, running, and monitoring of activities in the production process: nursery, forestry, harvesting, logistics and biomass production.

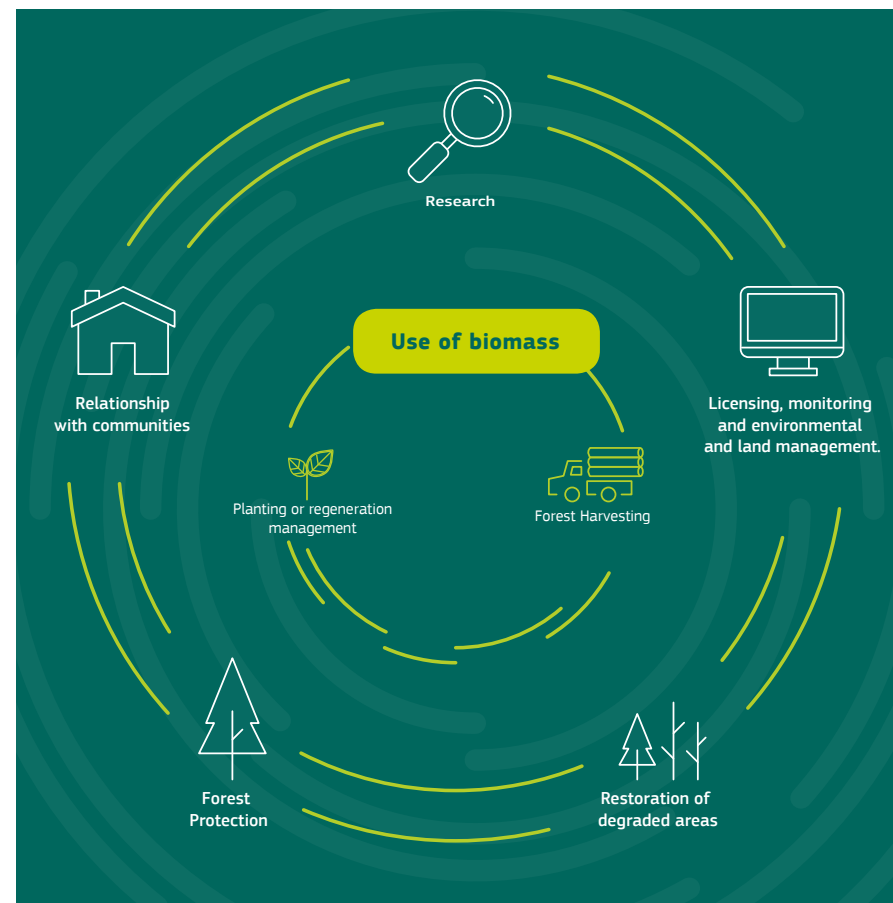
### FOREST MANAGEMENT

The management cycle<sup>3</sup> for *Pinus spp.* is about 15 years and for *Eucalyptus spp.*, 7 years. The choice for planting *Pinus taeda*, *Pinus patula*, *Eucalyptus dunnii*, *Eucalyptus badjensis* and *Eucalyptus benthamii* is due to the adaptation of these species to the climatic conditions of the southern region of the country, in addition to the specific soil conditions that allow excellent productivity. The forestry production cycle starts with the harvesting at the areas of own production<sup>4</sup> or acquisition of seeds of genetic material of superior levels and adapted to the region of stands settlement.

The production of forest seedlings takes place in the forest nursery, located near Vila Campina da Alegria in Vargem Bonita (SC). In 2022, around 1.7 million seedlings were produced, more than 1.4 million *Pinus sp.* and 250,000 of *Eucalyptus sp.*

In addition, we have the native species seedlings production to be used in environmental recovery projects, enrichment of native vegetation areas and donations in socio-environmental activities with the surrounding communities and collaborators.

The first stage of implementing the *Pinus* and *Eucalyptus* plantation is the soil preparation. Part of the plant material left over from the harvesting operation (leaves, bark, branches) is partially kept in the soil to protect it.



<sup>3</sup> Management cycle corresponds to the planting implementation phase up to the forest harvesting phase

<sup>4</sup> APS – Seed Production Areas



## Forest Management

Part of the harvesting residue forms a layer that protects the soil from erosion, maintains its humidity and contributes to the replenishment of nutrients. Pinus are planted during the whole year, while the *Eucalyptus* are planted only from October to December.

The areas cultivated makes a mosaic with the Permanent Preservation Areas (PPA) and Legal Reserve (LR), which guarantees the conservation of biodiversity through the formation of blocks and ecological corridors. This system facilitates the gene flow of flora and fauna between the forest remnants.

Harvesting is mechanized, ensuring better working conditions and safety for employees. In clearcutting, the following equipment is used: directional feller for felling, skidder for dragging, harvester for delimbing and processing, and cranes for loading. For support, are used winches, tractors with winch and felling with a chainsaw in special cases.

The phases of Nursery, Forestry, Chip Production for Biomass and Forest Roads are carried out by our own teams, while the Soil Preparation, Forestry Harvesting and Wood Transport are carried out by outsourced companies, in fully compliance with the legislation and principles of FSC®.

All operational activities are planned in advanced by the team during the preparation of operational micro-planning, where social, safety, environmental and operational aspects are gathered.

The continuous forest inventory at Irani is carried out every three years and aims to provide qualitative and quantitative information on the wood stock. In addition, it is held pre-cut inventories, which help to plan the forestry production, the optimization of forests usage and in making short, medium and long-term strategic decisions.





## Forest Management



### FOREST PROTECTION

#### Prevention of Forest Fires

Irani carries out continuous actions to prevent forest fires in local communities, in its own forest areas and in partnerships forest areas. The company has a fire truck and firefighting equipment, and an Emergency Brigade trained to fight Forest Fires and act in emergency situations. It also maintains a firebreak maintenance schedule and a cooperation agreement with the Volunteer Firefighters of Irani for support in training and accidents. In 2021, a monitoring center was installed and put into operation, with the objective of monitoring occurrences, the main one being the identification of forest fire outbreaks.



#### Pest monitoring and control

The monitoring of sirex woodwasp (*Sirex noctilio*) has been carried out by Irani since 1990. The attacks and the parasitism rate are monitored annually to keep the health of its own forest and partner forests, in addition to preventing possible economic losses.

#### Asset Surveillance

The monitoring and surveillance of Irani's areas are carried out by its own team and have the support of a hired company. It is made frequent rounds to control the access, restrict predatory actions against fauna and flora and prevent damage to forest plantations. With the objective of cooperation, the company maintains an agreement with the Environmental Military Police to act in inspection actions and environmental education.



## Forest Benefits

The forest is not only important for the timber resources it provides. Irani recognizes that there are several other benefits that natural and planted forests have and that these values need to be identified. Forest management activities should encourage the efficient use of forest products and services in order to ensure economic viability while generating environmental and social benefits.

Forests have effect on water regulation, maintaining a balance of physical and chemical characteristics of the soil. With the implementation and maintenance of natural and planted forests, in accordance with appropriate management techniques, the soil structure also remains stable. In addition, it reduces the impact of rainwater on the soil, which reduces the risk of erosion and keeps the soil quality, preventing siltation.

Forests have the capacity to capture and fix carbon for decades and store it as wood. Since 2006, Irani has maintained its Positive Carbon company certificate, being the first company in Brazil to certify the Greenhouse Gas Emissions Inventory in compliance with the international standard ISO 14.064/2006.

The inventory, in addition to guiding actions to reduce environmental impacts, seeks to identify opportunities for new Clean Development Mechanism (CDM) projects, increase transparency in Irani's environmental sustainability, strengthen investor confidence and help identifying risks, facilitating the Company's environmental management plan.

▲ Irani also recognizes as benefits of its forests:

▲ Conservation of native forest resources and biodiversity.

▲ Maintenance and restoration of Permanent Preservation Areas to protect water resources, conservation of springs and water sources.

▲ Employment and income generation.

▲ Honey production.

▲ Visitation for recreational and leisure purposes.

▲ Environmental awareness among employees.

▲ The core of Irani's activities is guided by the use of renewable resources and harmonious coexistence with the environment. With this natural resource management model, combined with an ethical business environment and respect for people, it seeks to constantly reaffirm its commitment to sustainability.





## Biodiversity



Irani's forest areas are inserted in the Atlantic Forest Biome, in the midwest region of Santa Catarina characterized as Mixed Ombrophylous Forest, also known as Araucaria Forest or Black Forest.

The monitoring of the biodiversity attributes of native forests is carried out by companies hired by Irani in sample areas, defined since the first monitoring sessions, and has the purpose to

monitor the indicators and monitor the environmental preservation actions performed by the company.

### FLORA SURVEY

Studies began in 2009 and so far, 120 species have been identified, including 11 listed at the endangered species list.



Brazilian pine – *Araucaria angustifolia* | Source: Sumatra Environmental Intelligence

Flora species classified under conservation status identified in environmental monitoring on Irani's properties:

Scientific name	Common name	IUCN	National	State (SC)
<i>Araucaria angustifolia</i>	Araucaria, Brazilian pine	CR	EN	CR
<i>Butia eriospatha</i>	Butiazeiro, butiá	VU	VU	CR
<i>Cedrela fissilis</i>	Cedar	VU	VU	
<i>Dicksonia sellowiana</i>	Xaxim		EN	CR
<i>Inga lentiscifolia</i>	Inga	VU	NT	
<i>Myrcianthes pungens</i>	Guabiju	EN		
<i>Myrciaria cuspidata</i>	Camboim	VU	LC	
<i>Ocotea porosa</i>	Imbuia	VU	EN	CR
<i>Podocarpus lambertii</i>	Pine Pinho-bravo	NT	LC	EN
<i>Podocarpus sellowii</i>	Pine Pinho-bravo	EN	LC	
<i>Quillaja lancifolia</i>	Pau-de-sabão		EN	

International: Official List IUCN (International Union for Conservation of Nature) version 2022-2.  
 National: ICMBio Red Book of the Brazilian Flora Endangered (2018)/MMA Ordinance No. 148, of June 7th, 2022.  
 State (SC): Official List of Flora Species endangered in the State of Santa Catarina (CONSEMA Resolution No. 51/ 2014)  
 Legend: CR - Critically endangered; EN - Endangered; VU – Vulnerable; NT - Near to be endangered; LC – Little concern.

## Biodiversity



### FAUNA SURVEY

Fauna surveys began in 2008, among the species already identified in the areas of Irani, the following tables show those that are in extinction risk categories, based on population data,

geographic distribution and threats defined by the IUCN and the national and local list (SC).



Agouti – *Dasyprocta azarae* | Source: Sumatra Environmental Intelligence

### FAUNA SURVEY – MAMMALS

Fauna species classified under conservation status identified in environmental monitoring on Irani's properties:

Species	Common name	International	National	State (SC)
<i>Mazama americana</i>	Red brocket deer	DD		EN
<i>Mazama nana</i>	Pygmy brocket	VU	VU	VU
<i>Pecari tajacu</i>	Colored Peccary	LC	LC	VU
<i>Leopardus pardalis</i>	Ocelot	LC	LC	EN
<i>Puma concolor</i>	Cougar	LC	LC	VU
<i>Puma yagouarondi</i>	Jaguarundi	LC	VU	
<i>Leopardus guttulus</i>	Southern oncilla	VU	VU	
<i>Alouatta guariba clamitans</i>	Brown howler monkey	LC	VU	VU
<i>Cuniculus paca</i>	Lowland paca	LC	LC	VU
<i>Leopardus wiedii</i>	Margay	NT	VU	

International: Official List IUCN (International Union for Conservation of Nature) version 2022-2.

National: Red Book of Brazilian Fauna endangered (ICMBio, 2018)/MMA Ordinance No. 148, of June 7th, 2022.

State (SC): Official List of Endangered Fauna Species in the State of Santa Catarina (CONSEMA Resolution No. 002/2011) Legend: CR - Critically endangered; EN - Endangered; VU - Vulnerable; NT - Near to be endangered; LC - Little concern, DD - Deficient Data





## Biodiversity

### FAUNA SURVEY - BIRDS

Specie	Common name	International	National	State (SC)
<i>Tinamus solitarius</i>	Solitary Tinamou	NT		VU
<i>Accipiter superciliosus</i>	Tiny Hawk	LC	LC	VU
<i>Triclaria malachitacea</i>	Blue-bellied Parrot	NT		VU
<i>Pyroderus scutatus</i>	Red-ruffed Fruitcrow	LC		EN
<i>Sporophila melanogaster</i>	Black-bellied Seedeater	NT	VU	VU

### FAUNA SURVEY - AMPHIBIANS

Specie	Common name	International	National	State (SC)
<i>Melanophryniscus simplex</i>	South American redbelly toads	DD		EN
<i>Vitreorana uranoscopana</i>	Humboldt's glass frog		LC	VU
<i>Boana curupi</i>	Yellow-spotted tree frog	LC	VU	EN

International: Official List IUCN (International Union for Conservation of Nature) version 2022-2.  
 National: Red Book of Brazilian Fauna endangered (ICMBio, 2018)/MMA Ordinance No. 148, of June 7th, 2022.  
 State (SC): Official List of Fauna Species Endangered in the State of Santa Catarina (CONSEMA Resolution No. 002/2011)  
 Legend: CR - Critically endangered; EN - Endangered; VU - Vulnerable; NT - Near to be endangered; LC - Little concern, DD - Deficient Data



Tangara – *Chiroxiphia caudata* Source: Sumatra Environmental Intelligence



## Biodiversity



### HCVA - HIGH CONSERVATION VALUE AREAS

The verification of the conservation attributes in Irani area was carried out according to the ProForest Guide and the FSC® Principles and Criteria (item 9), namely:

#### HCV 1

Concentrations of biodiversity values that are important globally, regionally or nationally.

#### HCV 2

Large forests that at landscape level are globally, regionally or nationally important

#### HCV 3

Areas that have rare, threatened or endangered ecosystems.

#### HCV 4

Areas that provide basic nature services in critical situations.

#### HCV 5

Areas that are key to meeting the basic needs of local communities.

#### HCV 6

Areas that are critical to the traditional cultural identity of local communities.

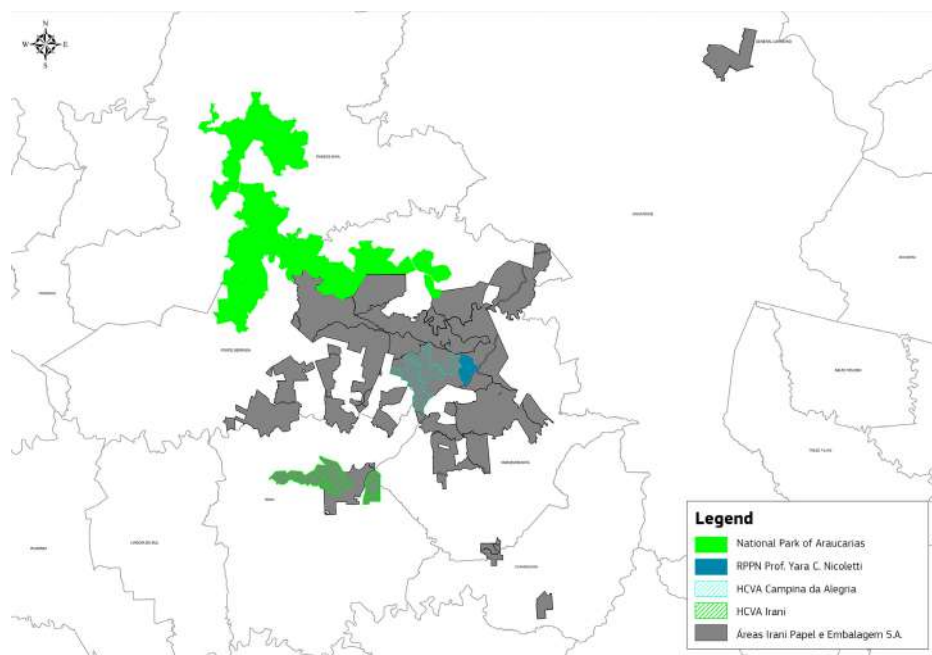
The verification and definition of values were based on specialist studies and public consultation with interested parties.

The evaluation's result defined two areas with attributes of high conservation value, totaling 3,150 hectares.

AAVC	Area (hectares)	Type AAVC	Evaluation result
Campina da Alegria	1,441.34	1, 2 e 3	<ul style="list-style-type: none"> <li>▲ Presence of endangered bird, mammal and flora species in high endangered categories.</li> <li>▲ Sections of remnants in a good conservation level.</li> </ul>
Irani	1,708.66		<ul style="list-style-type: none"> <li>▲ Large remnants (over 1,000 hectares), compared to the extremely fragmented region.</li> <li>▲ Registered and preserved Legal Reserve area.</li> </ul>
<b>Total</b>	<b>3,150.00</b>		

## Biodiversity

### LOCALIZATION OF HCVAs IN IRANI



It is defined protection and monitoring measures In HCVAs to reduce threats and/or increase or improve the identified attributes.

In addition to the items listed, complaints and suspicious actions are raised and controlled with the support of the Environmental Military Police (PMA).

#### AAVC

#### Threats

#### Protection and Monitoring Measures

##### Campina da Alegria\*

- Forest fire
- Domestic animals
- Waste of communities
- Illegal hunting

- Operational microplanning
- Implementation and training of the Emergency Response Plan
- Asset surveillance
- Garbage collection

##### Irani

- Operational and property damage
- Damage to native vegetation
- Dispersion of invasive exotic species
- Theft of wood and non-timber products
- Visitation without control
- Acts of vandalism at the infrastructure
- Erosion

- Environmental Education Activities
- Maintenance of fences and signposts
- Communication with the community
- Fire Prevention Plan
- Monitoring of fauna and flora
- Visitation monitoring
- Record of incidents at the Environmental Military Police (PMA)
- Exotic Species Dispersion Control
- Road Maintenance Plan
- Environmental Impact Assessment

\* Creation of RPPN in part of the area



## Biodiversity

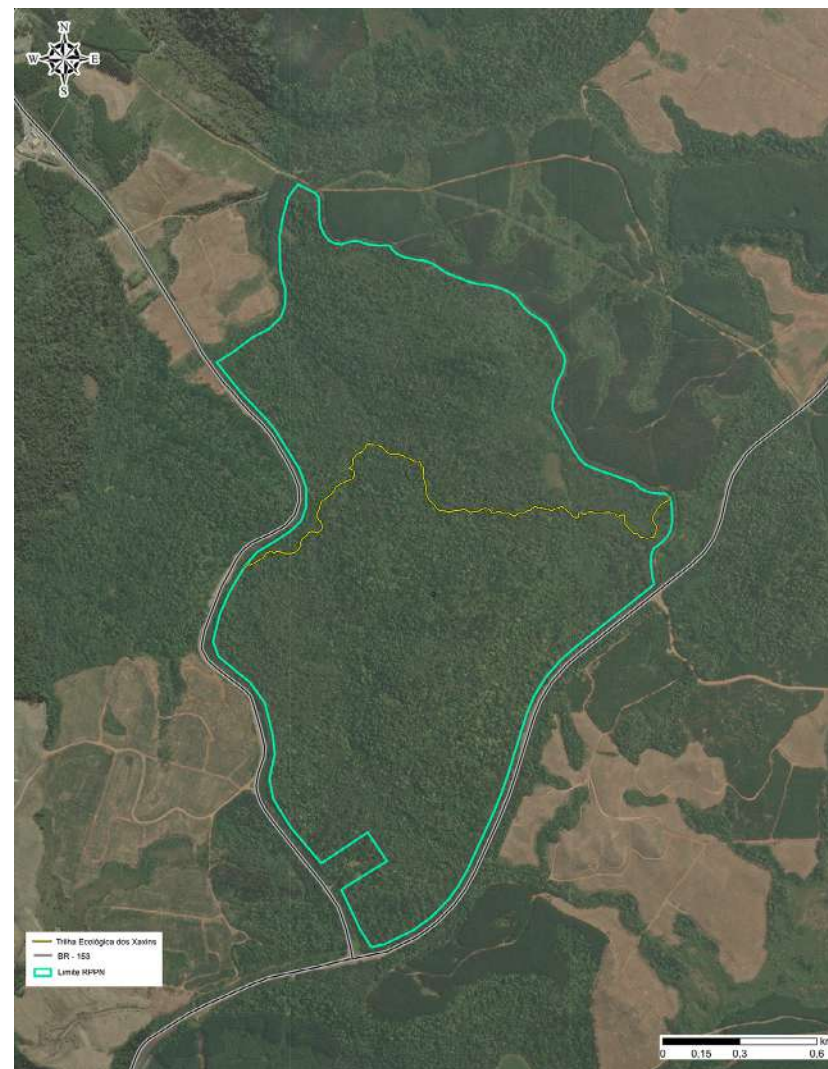


### RPPN - PRIVATE RESERVE OF NATURAL HERITAGE

RPPN (Private Reserve of Natural Heritage) is a private conservation unit of a perpetual character and governed by federal legislation. The RPPN Prof. Yara C. Nicoletti, owned by Irani, is located in the AAVC Campina da Alegria, in Vargem Bonita (SC). The reserve was created in 2018 by Ordinance IMA nº 83/2018 and has 285 ha of preserved vegetation characteristic of Mixed Ombrophylous Forest (FOM). Within the reserve is the Xaxins Ecological Trail, which allows external visitation with company monitoring.

### XAXINS ECOLOGICAL TRAIL

Having a route of 2,557 meters, the Xaxins Trail is located at RPPN Prof. Yara C. Nicoletti and since 2009 it is the main point for environmental education actions. During the course, participants can experience all the aspects that Araucaria Forest offers and discuss aspects of conservation and environmental monitoring. It is a unique and enriching experience that shows the importance of Irani's sustainability actions.



RPPN (Private Reserve of Natural Heritage)



## Biodiversity



### ENVIRONMENTAL EDUCATION

The environmental education actions developed by Irani involve the schools in the community's area where the company, employees and service providers operate.

The purpose is to strengthen relationships, pass on information about environmental preservation actions and strengthen the communication channel with those involved. Among the activities carried out are lectures, visits to the ecological trail, donation of native seedlings, ecological checkpoints and visits to the forest nursery.



Robust woodpecker - *Campephilus robustus* | Source: Sumatra Environmental Intelligence



*Esloanea lasicoma* | Source: Sumatra Environmental Intelligence





## Social and Environmental Management

Irani undertakes co-responsibility for social and environmental development in all its activities and seeks to connect stakeholder interests with the environment in its actions, creating opportunities to develop the surrounding communities.

### RELATIONSHIP WITH COMMUNITY

Irani is concerned about the impacts of its forest management. Before and after forestry activities, the team visits people affected by the operation. The purpose of this action is to keep the communication channel to register any complaints, doubts and contact the company. Impacts resulting from forestry operations are monitored and mitigated by applying operational procedures based on management techniques that cause the least impact.





## Monitoring

### TECHNICAL AND ECONOMIC DATA

Type	Indicator	2020	2021	2022
Economic	Production (t) of wood - cellulose	460.981	443.141	431.937
Economic	Production (t) of wood - biomass	74.507	115.239	129.906
Economic	Purchase of wood (t) - cellulose	39.330	33.180	29.005
Economic	Purchase of wood (t) - biomass	252.724	218.988	201.819
Economic	IMA (Average Annual Increment) - m <sup>3</sup> /hectares/year			
	Pinus	38.0	38.0	38.4
	Eucalyptus	44.0	44.0	42.8
Economic	Cultivated area (hectares)	893.3	692.4	1043.97

\*Data refer to the Forestry (SC) and Paper (SC) Units

### ENVIRONMENTAL DATA

Type	Indicator	2020	2021	2022
Environmental	Number of fauna species identified (birds, mammals, amphibians, reptiles)	320	320	320
Environmental	Number of flora species identified	120	120	120
Environmental	Number of people involved in environmental education activities <sup>1</sup>	299	3297	4005
Environmental	Number of hours made available for environmental education <sup>1</sup>	273	239.5	2450
Environmental	Students assisted by the environmental education program – ecological trail <sup>2</sup>	0	0	270
Environmental	Number of research projects (under contract)	11	10	9
Environmental	Number of native seedlings donated.	4980	10783	9028

<sup>1</sup> Data refer to all Irani Units

<sup>2</sup>Due to the pandemic, visits to the Ecological Trail were suspended.

### SOCIAL DATA

Tipo	Indicador	2020	2021	2022
Social	Number of employees	78	82	88
Social	Number of Third party	99	86	78
Social	Occurrence of accidents			
Social	Employees	0	0	0
Social	Third party	2	1	1
Social	Occupational Health and Safety Monitoring (% compliance)	96,6 %	96,8 %	97,3 %





## Communication Channels

Irani maintains several channels of communication with its stakeholders, such as lectures in schools and communities, the internet page, research projects and support for social projects, participation in forestry councils and meetings, and internal programs aimed at workers, such as Organizational Climate.



### Website

[www.irani.com.br](http://www.irani.com.br)

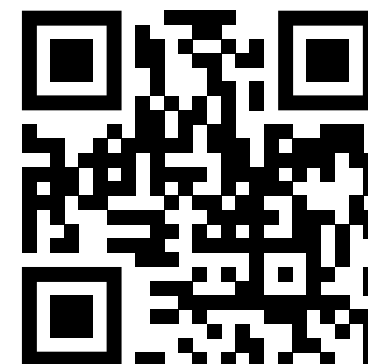
### Social media

[facebook.com/irani.br](https://facebook.com/irani.br)

[instagram.com/irani\\_oficial/](https://instagram.com/irani_oficial/)

[linkedin.com/company/irani\\_oficial/](https://linkedin.com/company/irani_oficial/)

[twitter.com/irani\\_oficial](https://twitter.com/irani_oficial)



**For more information, suggestions or questions, please contact:**

[faleconosco@irani.com.br](mailto:faleconosco@irani.com.br)

+55 (49) 3548-9156

### Florestal – SC

Rodovia BR 153 – Km 47 Vila Campina  
da Alegria – Vargem Bonita – SC  
Correspondências CP 87 – Joaçaba-SC  
CEP 89600-000

### Office SC – Joaçaba

Rua Francisco Lindner, 477 – térreo  
Joaçaba-SC  
CEP 89600-000





The brand of responsible  
forest management



[irani.com.br](http://irani.com.br)

